



SECAM

Fixing Solutions



Fixing solution for sandwich & honeycomb panel

ENGINEERING FASTENERS ●●●

INSERTS / THREAD FORMING SCREWS / SHEET METAL FASTENERS

Catalog Products / Custom Parts



AUTOMOTIVE



ELECTRONICS



**AEROSPACE
& DEFENCE**



RAILWAY

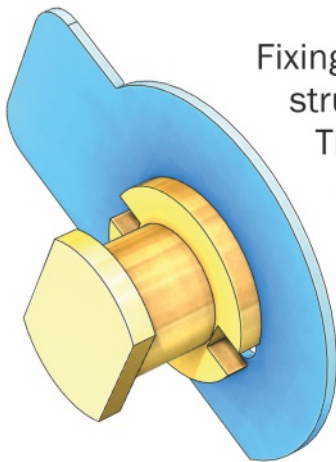
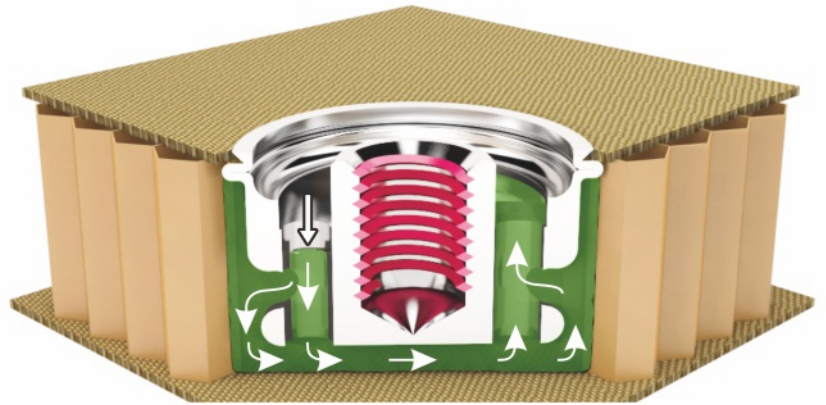


**BUILDING
HOME AUTOMATION**

SECAMnida®

Optimized Fixation for sandwich & honeycomb panel

Nowadays, the transportation industry is facing the lightening challenge which is being intensified by a context of reduction of the energy consumption. Thus, new materials have appeared, mainly in the field of composites. However, the assembly technologies of these materials, and in particular for composites called «sandwich panels» have not significantly evolved since their appearance in the 60s and 70s.



Fixing solutions using potted inserts are still widely used in sandwich panel structures.

The actual installation process requires many manual operations as well as an immobilization of nearly 24 hours for curing time. When it comes to fastening solutions, sources of productivity growth are the subject of intense researches.

New assembly technologies can greatly help reduce production costs. This is why it is essential to rethink some manufacturing processes.

SECAMnida® fixing solution principles

- A crimping process to maintain the insert on the upper skin
- Injection of two-components potting compound
- A visual inspection of the filling via the second vent hole. No additional finishing operations.

Objectives :



Design

Simplified structures design
No extra reinforcement

Strong

Equivalent or higher mechanical strength in regards to standard



Light

Lighten metal inserts
Overall weight reduction

Fast

Installation is 4 time quicker and requires 50% less steps compared to conventional methods



Costs Killer

Decrease of production downtimes
Strong overall productivity gain
Non-quality strongly reduced

Simple

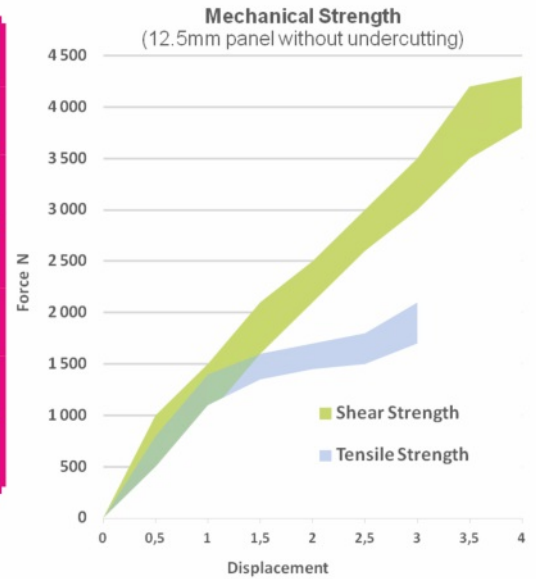
Immediate handling after crimping
No needs for finishing operations



Objective : reduce the number of steps, the time and downtime required, insert installation to simplify the automation of insert installation

Main Characteristics

	Current situation by industries (Insert Potted)			NidAero®
	Aeronautics	Aerospace	Railway	
Number of steps	6-7 steps	7-8 steps	6-7 steps	3-4 steps
Time of installation	~ 2-3 min	~ 15-25 min	~ 2 min	30 sec to 1 min
Work-in-progress (immobilisation on production line)		High		Low - Immediate handling allowed
Automation		Hard		Yes
Finishing operations		Yes		No

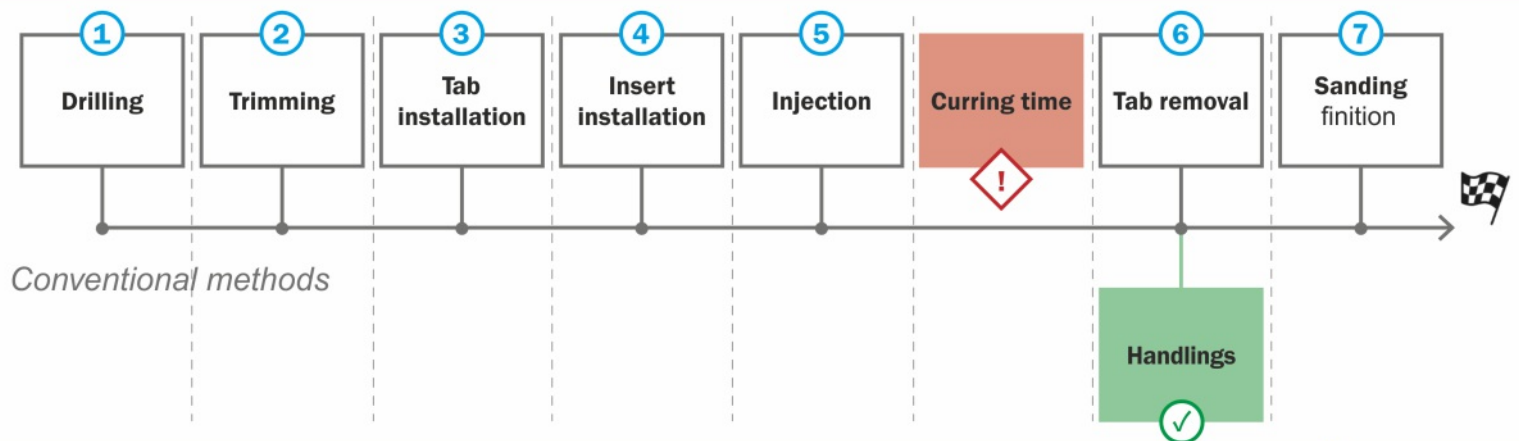


A dedicated Fully Automated Process

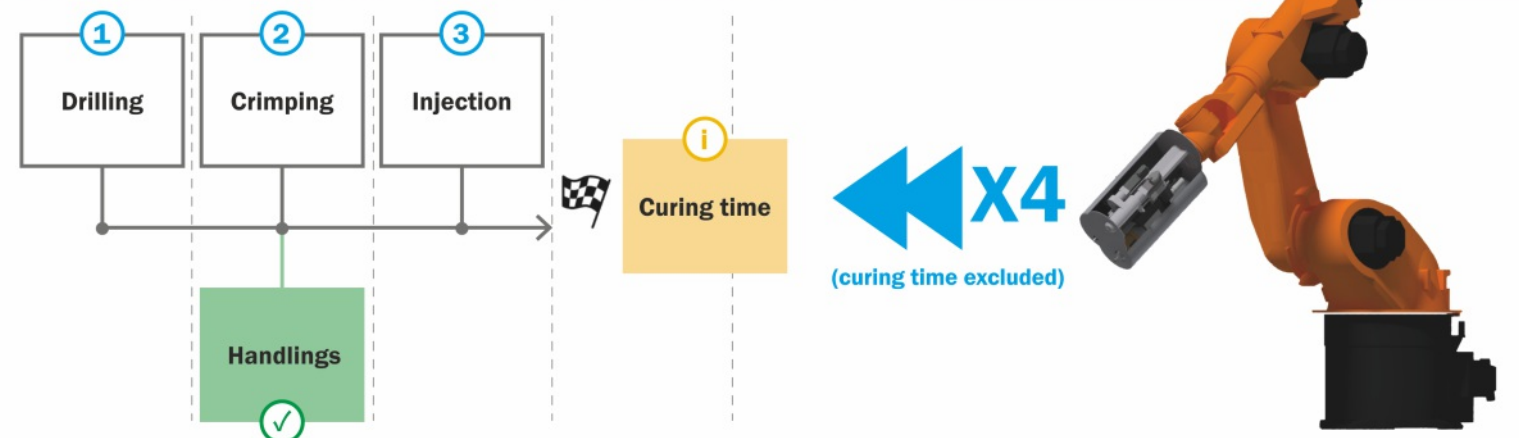
Current installation methods require the gripping of several mechanical, electrical or pneumatic tools.

Objective : Provide to the market a robotized process for the preparation and the installation of inserts using SECAMnida® solution.

NAS potted inserts manual installation



SECAMnida® insert manual installation or a fully automated process





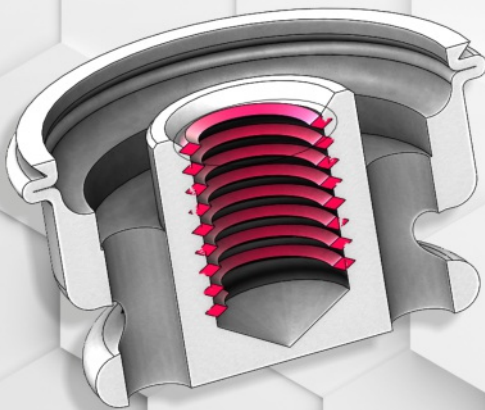
SECAM
Fixing Solutions



GEBE2

Europe Technologies group

*SECAM, provider of fixing solutions,
join forces with GEBE2 to offer
a fully automated process
for fasteners installation
in sandwich and honeycomb panels*



GEBE2 - Robotized solutions for industry

1 rue de l'Espérance - ZA de l'Espérance
85600 MONTAIGU-VENDÉE (France)

Tel.: +33 (0)2 51 09 25 05

Fax: +33 (0)2 51 09 25 10

gebe2@europetechnologie.com

www.gebe2-et.com

SECAM FIXING SOLUTIONS

119, allée des Prioies - BP 43

74460 MARNAZ - France

Tel.: +33 (0)4 50 18 33 40

Fax: +33 (0)4 50 93 34 91

contact@secam-fixation.com

www.secam-fixing.com

DIEUPART
so faire remarquer, c'est un métier.

+33 4 50 58 24 40
www.dieupart.com